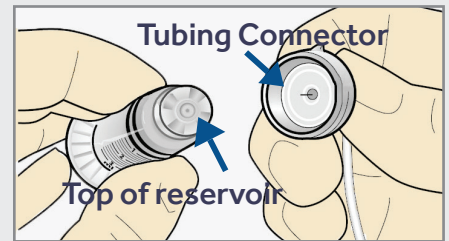


WARNING:

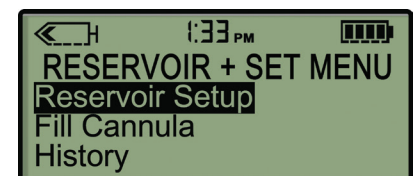
If insulin, or any liquid, gets inside the tubing connector, it can temporarily block the vents that allow the pump to properly prime the infusion set. This may result in the delivery of too little or too much insulin, which can cause hyperglycemia or hypoglycemia. To prevent insulin from getting inside the tubing connector of the MiniMed Quick-set infusion set, after you fill the reservoir make sure you hold the insulin vial upright when you remove the reservoir from the transfer guard. If you do not hold the insulin vial upright, insulin can get on the top of the reservoir and could transfer liquid into the tubing connector.



For more information please see the MiniMed Paradigm REAL-Time Revel insulin pump User Guide.

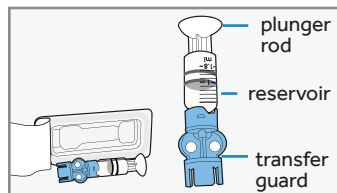
PART 1: REWIND THE PISTON IN THE PUMP

- 1) Wash your hands. Remove the old infusion set from your body and the reservoir from the pump.
- 2) Press **ACT** for the MAIN MENU and select **Reservoir + Set**, then select **Reservoir Setup** to open the **REWIND** screen. Press **ACT** to rewind. Stop at the **Rewind Complete** screen.

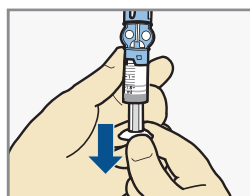


PART 2: FILL THE RESERVOIR

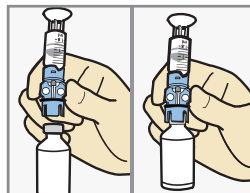
- 1) Remove the reservoir from the package.



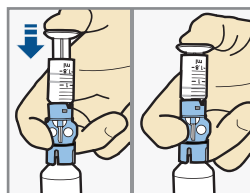
- 2) Pull the plunger down to fill the reservoir with air.



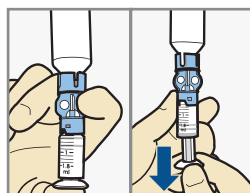
- 3) Wipe the top of the insulin vial with alcohol. Hold the **blue** transfer guard and press it down onto the insulin vial.



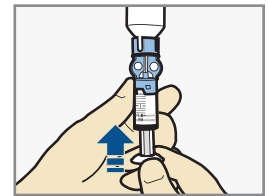
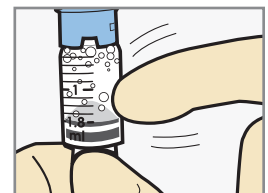
- 4) Push down on the plunger to push air from the reservoir into the vial. Continue to hold the plunger down.



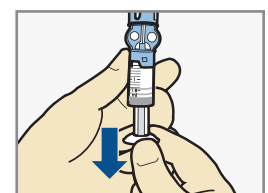
- 5) Flip the vial over so it is now on top. Slowly pull the plunger down to fill the reservoir.



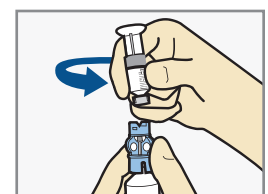
- 6) Check the reservoir for air bubbles. Tap the side of the reservoir to force any bubbles to rise to the top. Gently push up on the plunger to move the air bubbles from the reservoir into the insulin vial.



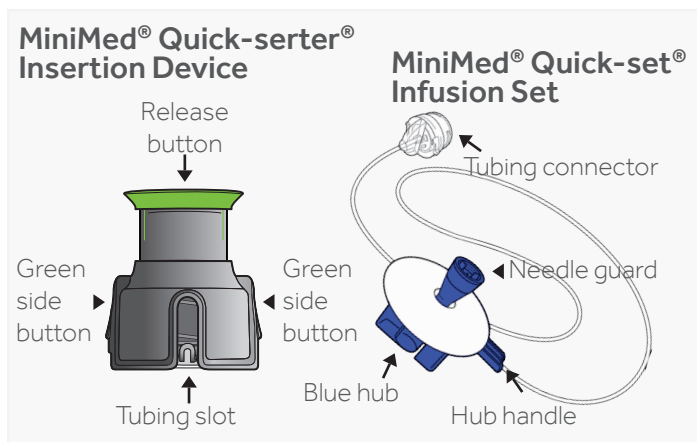
- 7) After the air bubbles are removed, slowly pull the plunger down to fill the reservoir with enough insulin to last 2-3 days.



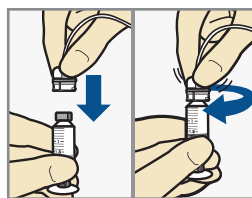
- 8) To avoid getting insulin on the top of the reservoir, flip the vial over, so the vial is upright. Hold the transfer guard, and turn the reservoir counter-clockwise. Pull the reservoir straight up to disconnect it from the transfer guard. Discard the transfer guard into a sharps container.



PART 3: CONNECT THE RESERVOIR TO THE TUBING

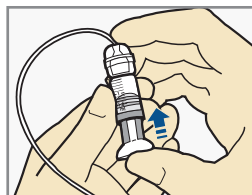
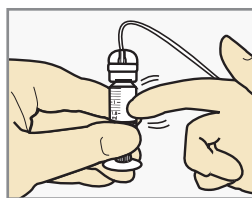


- 1) Remove the MiniMed Quick-set infusion set from the package and unwind tubing.
- 2) Make sure the top of the reservoir is dry. Gently push the tubing connector onto the top of the reservoir and turn it clockwise until it slides and locks into place.

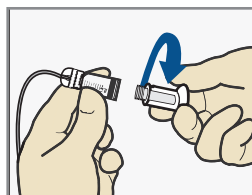


NOTE: If insulin or any other liquid has gotten on the top of the reservoir or inside the tubing connector, discard both and start over with a new reservoir and infusion set.

- 3) Tap the side of the reservoir to force any remaining bubbles to rise to the top. Gently push up on the plunger until bubbles are out and you see a small amount of insulin in tubing.

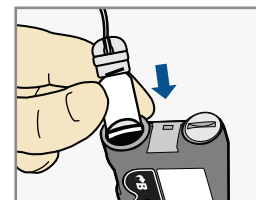
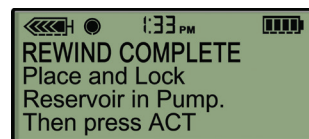


- 4) Turn the plunger counter clockwise to unscrew it from the reservoir. Be careful not to pull the plunger before it is disconnected, or insulin will spill out.

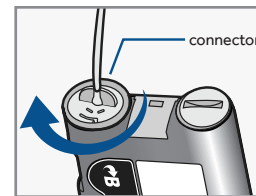


PART 4: FILL THE TUBING

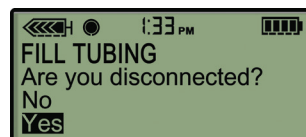
- 1) Press **ACT** so that **REWIND COMPLETE** appears. Insert the newly filled reservoir into the reservoir compartment.



- 2) Turn the tubing connector clockwise until it locks into place.



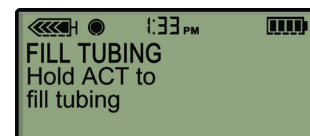
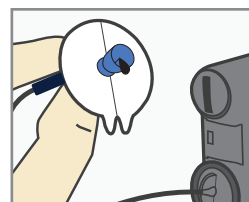
- 3) Press **ACT** to go to the **FILL TUBING** screen. Be sure the infusion set is NOT connected to your body. Then select **YES** and press **ACT**.



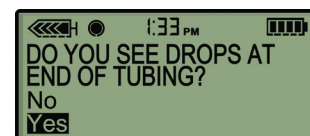
IMPORTANT:

Never Fill Tubing while you are connected to the pump.

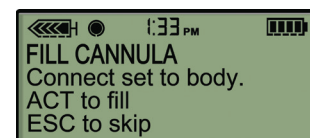
- 4) Press and hold **ACT** to fill the tubing. The pump will beep as the tubing fills. Release **ACT** when you see drops at the end of the needle of the infusion set. Then press **ESC**.



- 5) If you see drops at the end of the needle and there are no air bubbles in the tubing, select **YES** and press **ACT**.

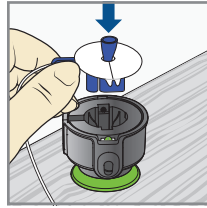


- 6) When the **FILL CANNULA** screen appears, you are ready to insert your infusion set.

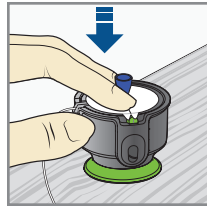


PART 5: LOAD THE INFUSION SET INTO THE INSERTION DEVICE

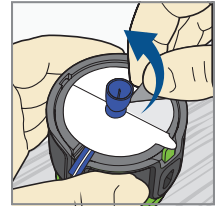
1) Place the MiniMed Quick-serter insertion device onto a sturdy flat surface with handle facing down. Place the **blue** hub of the infusion set into the serter. The hub handle and tubing should be lined up with the tubing slot on the insertion device.



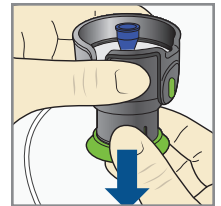
2) Use two fingers to seat the infusion set inside the serter securely and gently push down.



3) Peel the paper from the adhesive on both sides of the needle guard.



4) Pick up serter and pull **green** handle down until it clicks. The two **green** side buttons will also click into place. Be careful not to press the **green** side buttons on either side of the serter.



PART 6: CHOOSE INSERTION SITE

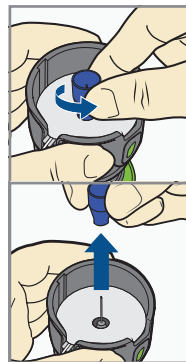
The best areas of the body to insert the infusion set are shown in the shaded areas of this drawing. Choose areas that are away from the natural bend of your waist or belt line of your pants. Avoid areas of hard or scar tissue. Consult with your healthcare provider on appropriate areas to insert your infusion set.



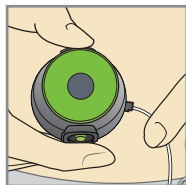
PART 7: INSERT THE QUICK-SET INFUSION SET

1) Wipe the selected insertion site with alcohol or other antiseptic wipe.

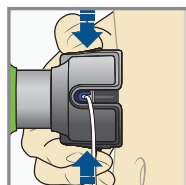
2) Turn the needle guard to loosen it and lift it away to expose the needle.



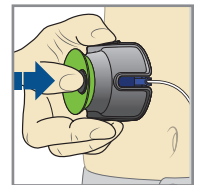
3) Hold the serter against the prepared site on your body.



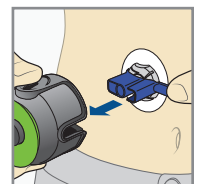
4) Press the two **green** side buttons at the same time. If they are not pressed at the same time the infusion set will not insert properly.



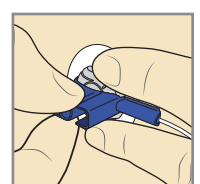
5) Press down the release button of the serter to release the infusion set. You may feel the serter lift away from your body as you push down on the release button. This is normal.



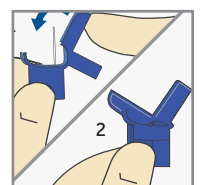
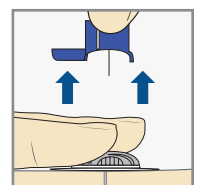
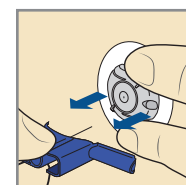
6) Pull serter away from your body. Press the adhesive securely against your skin.



7) With one hand, place your fingers on the infusion set. With the other hand, pull the **blue** hub straight out to remove the insertion needle.

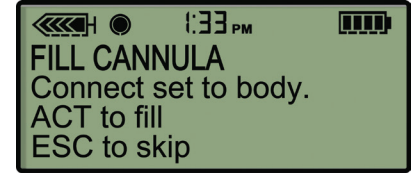


8) Fold the hub handle in half until it locks into place. Dispose into a sharps container.

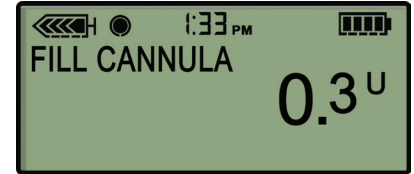


PART 8: FILL THE CANNULA

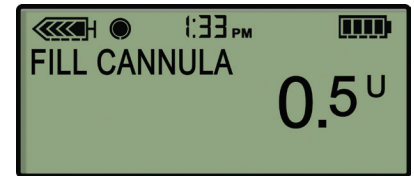
1) If the pump has returned to the **HOME** screen, press **ACT**. On the **FILL CANNULA** screen, press **ACT**.



2) If you are using a 6mm cannula, press **^** to enter 0.3 units of insulin. Press **ACT**.



Or, if you are using a 9mm cannula, press **^** to enter 0.5 units of insulin. Press **ACT**.



NOTE: Fill Cannula is to fill the empty cannula after the insertion needle has been removed. The tubing is already filled.